



Care & Maintenance of Interpon Powder Coatings

Maintaining the integrity of your powder coated products is just like caring for your car – and is a smart way to protect your investment.

Over time with exposure to the elements, powder coatings may show signs of weathering such as loss of gloss, chalking and slight color change. A simple regular clean will minimise the effects of weathering and will remove dirt, grime and other build-up detrimental to all powder coatings.

The frequency of such cleaning will depend on many factors including the:

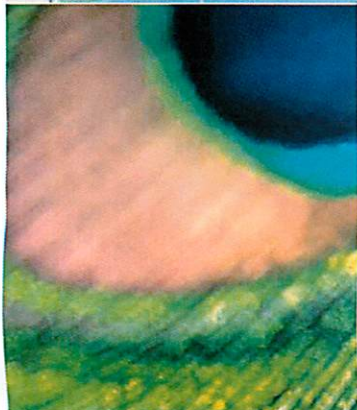
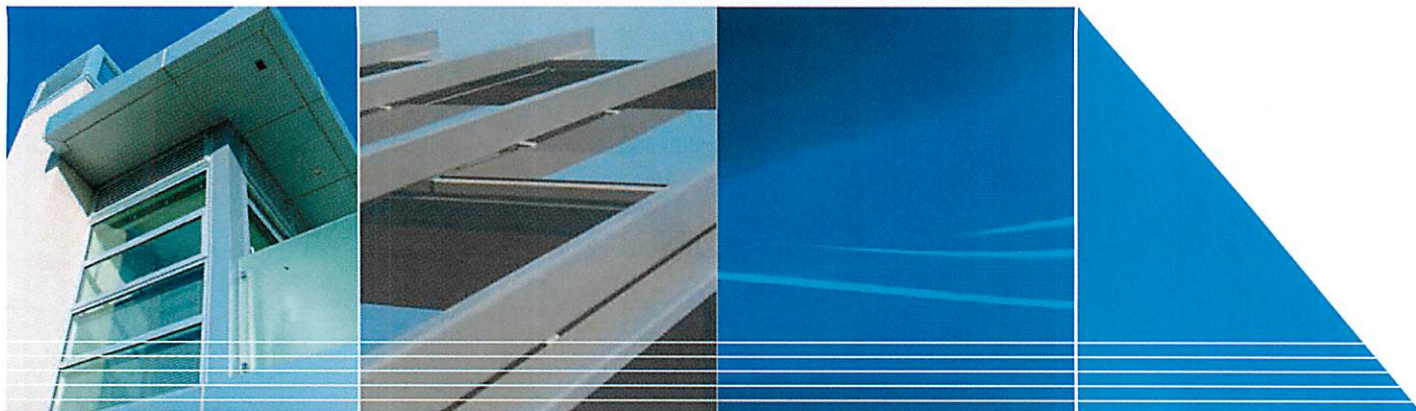
- ▶ Geographical location of the building.
- ▶ Environment surrounding the building e.g. marine, industrial, alkaline or acidic, etc.
- ▶ Levels of atmospheric pollution including salts.
- ▶ Prevailing winds and the possibility of air borne debris causing erosive wear of the coating e.g. sand causing abrasion.
- ▶ Protection of part or all of the building by other buildings.
- ▶ Change in environmental circumstances during the lifetime of the building e.g. if rural became industrial.

Cleaning should start at the time the products are installed, ensuring that construction materials such as concrete, plaster and paint splashes are removed before they have a chance to dry. Failure to remove these materials at this early stage will require the use of aggressive cleaning materials and techniques with potential damage to the powder coated surface.

The best method of cleaning is by regular washing of the coating using a solution of warm water and non-abrasive, pH neutral detergent solution. Surfaces should be thoroughly rinsed after cleaning to remove all residues. All surfaces should be cleaned using a soft cloth, sponge or a soft natural bristle brush. Cleaning of powder coated sections can be conveniently carried out at the same time as window cleaning.



AkzoNobel



The frequency of cleaning depends in part on the standard of appearance that is required and also the need to remove deposits that could cause damage during prolonged contact with either the powder film or the metal substrate (if exposed).

The classification of exterior environments is as defined in AS4312-2008. In environments with very high corrosivity levels, such as industrial or marine, the normal frequency of cleanings should be at a minimum of six monthly intervals.

Sheltered areas can be more at risk of coating degradation than exposed areas. This is because wind-blown salt and other pollutants may adhere to the surface and will not be cleaned away with rainfall. These areas should be inspected and cleaned if necessary on a more regular basis. Where the atmosphere is deemed to be non-hazardous, e.g. rural or 'normal' urban environments, then the period between cleaning can be extended up to a maximum of 24 months depending on the coating selection. However, if heavy soiling occurs more regular cleaning is required.

Category (AS4312)	Corrosivity Level	Environment Type	Required Cleaning*
C1 & C2	Very Low & Low	Non-hazardous Environment	Every 12 - 24 months
C3/T	Medium	Tropical Environment	Every 12 - 24 months
C4	High	Swimming & Leisure Pools/ Light Industrial	Every 6 - 12 months
C4	High	Coastal Environment	Every 6 - 12 months
C5-M	Very High	Beach Front / Marine	Every 3 - 6 months
C5-I	Very High	Heavy Industrial Environment	Every 3 - 6 months

* Refer to the Cleaning Schedule section in the Interpon D Specification Matrix for more details

WARNING. Do not under any circumstances use strong solvents such as thinners or solutions containing chlorinated hydrocarbons, esters or ketones. Abrasive cleaners or cutting compounds should not be used.

Interpon Powder Coatings recommends nothing stronger than white spirits to assist with stubborn stains. When using white spirits, cleaning should be carried out in shade and during cooler temperatures using a soft cloth and gentle wiping only. It is also recommended that prior to use, a small non-visible area of the powder coated article be tested to ensure that no visual color change or damage will occur, particularly with bright and deep colors. Please contact your local Interpon representative or the Interpon Customer Care Team for further advice.

Typical applications for Interpon products are displayed in this publication using actual projects and representative images. Unless otherwise agreed by us in writing, any contract to purchase products referred to in this brochure and any advice which we give in connection with the supply of products are subject to our standard conditions of sale. Interpon® is a registered trademark of Akzo Nobel International BV.

Copyright © 2011 Akzo Nobel Pty Limited ABN 59 000 119 424 Issue 8

Interpon
powder coatings

EVERY COLOR IS GREEN

www.specifyInterpon.com

SALES & SUPPORT

AUSTRALIA

e: salesoz@interpon.com
www.specifyInterpon.com.au

EAST COAST AND SOUTH AUSTRALIA

Tel: 1800 630 516
 Fax: 1800 650 786

WESTERN AUSTRALIA

Tel: 08 9494 7702
 Fax: 08 9494 7771

NEW ZEALAND

e: salesnz@interpon.com
www.interpon.co.nz

Tel: 0800 150 527
 Fax: 0800 809 679

All metals are susceptible to a natural process known as corrosion. Both natural and man made environments help reduce metals to their natural form, though the extent at which this occurs can vary considerably. In the case of aluminium, this natural form is aluminium oxide.

Aluminium and its alloys generally are more corrosion resistant compared to others. The moment aluminium is exposed to oxygen in air, a very thin, inert and transparent native oxide layer naturally forms and gives aluminium its good corrosion resistance. Surface treatments such as anodising and powdercoating are finishes designed to further improve upon this property.

Corrosion resistance, coupled with their mechanical properties, give Aluminium and its alloys their privileged use in many diverse applications and constructions.

Powder-coated and Anodised Aluminium

Powder-coat, once oven cured, becomes a solid and tough coating which adheres to the surface of properly pre-treated Aluminium. Powder coatings can be made in a multitude of colours, with various lustres, textures and special effects. The great range of colour options, make powdercoating a versatile and popular choice.

Aluminium Anodised finishes, result in the controlled formation of an oxide layer which is much harder, more durable and about a thousand times thicker than the thin oxide layer naturally formed. It has excellent tolerance in coastal environments and its appearance proves popular in architecturally designed features as well as window and door suites.

Both anodising and powder coating provide finished items with decorative value, as well as a level of protection from their environment. However, as with other types of metal, certain conditions and environments can render aluminium aesthetically unacceptable, even once Powder-coated or Anodised. It is therefore prudent to provide precaution and care for finished aluminium articles and components. Some of these precautions and care measures are listed below.

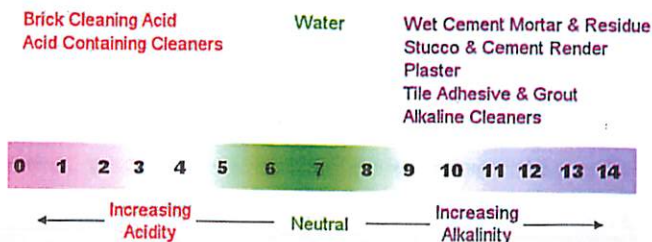
Avoid materials that can harm aluminium

Aluminium and its alloys are inherently corrosion resistant to materials in the pH range of 5 – 8. Strong Alkaline and Acid substances, those containing chloride, fluoride or sulphate additives as well as abrasive materials can degrade and attack this oxide layer. Consideration also needs to be made for higher temperatures, stronger concentrations and longer contact times, as these may significantly accelerate the rate of any chemical action.

Historically, one of the times of greater risk tends to occur upon building sites where materials that are highly alkaline or highly acidic come in contact with either bare or anodised aluminium. In order to prevent the risk of chemical attack which can lead to staining and discoloration, such substances should be prevented from contact with aluminium.

The following are a few examples of substances which are highly alkaline or highly acidic.

Guide to pH of some Common Building Materials



A) Preventative Care

"It is important to prevent the attack of anodic oxidation coatings by corrosive agents such as contaminated moisture, condensates, cement and plaster splashes." (Ref. AS1231-2000; Appendix D - Handling and Temporary protection during transportation and installation)

To avoid and minimise risks, it is recommended that aluminium surfaces are protected from attack via;

- As late-a-stage as possible Installation in order to minimise the possibility of on-site damage
- The application of a suitable protective barrier (e.g.: sheet film, tape or strippable coatings) prior to delivery on site or as soon after before works commence.

Note, the use of brand name or generic lubricants, oils, petrochemical agents...etc, are not effective as protective barriers against materials that can harm aluminium.

B) Immediate Clean

Depending on temperature and concentration, strong alkaline and strong acid materials can attack and leave stains on aluminium within minutes of contact time! So it is vitally important that measures be taken to prevent the risk of this occurring.

If for some reason, accidental splashing or spattering of foreign materials or their run-offs does occur, the Aluminium surface should be;

- Immediately wiped clean and
- Rinsed thoroughly with copious amounts of clean water, especially in cracks and crevices.

C) Regular Cleaning Maintenance

Just as you might provide regular care in maintaining the appearance of your motor vehicle, similarly, it is prudent to provide regular care in maintaining the decorative appearance of your powder coat or anodise finish.

Build up of soils and other grime can hold moisture to the coated surface, and this is detrimental to powder coatings and anodise finishes. This build up can facilitate a corrosive condition which may lead to damage of the coating, particularly in a coastal or salt air environment.

Powder and Anodic coatings should be cleaned and maintained in accordance with their relative standards; AS1231-2000 for anodising and AS3715-2002 for Powder-Coatings. Other references are appended at the end of this document.

Essentially these recommendations within these standards include;

1. Regularly* washing the finish with warm water containing a pH neutral; wetting agent or detergent.
 2. Use a non-abrasive fibre brush or sponge
 3. Thoroughly rinse with copious amounts of clean water immediately after every cleaning process
- The above should be carried out during cooler temperatures and preferably in shade.
 - After cleaning, the anodised aluminium may be treated with a good quality wax polish (AS1231-2000, App.C)
 - However, if heavy soiling does occur, more regular cleaning is recommended.

Environment	*Minimum regular clean and check Interval
Non-hazardous	12 months
Tropical	9 months
Swimming and Leisure Pools	6 months
Marine	3 months
Industrial	3 months
Hazardous	1 month

D) Stubborn Residue

For the cleaning of greasy, oily, sooty substances or adhesive residue, the Powder coat suppliers suggest the use of White-spirits or Isopropyl alcohol in combination with using a soft cloth and gentle wiping. Nothing stronger is permitted for use on Powder coat. It is also suggested that a small non-visible area be tested initially to ensure that no colour change or damage will occur, particularly on darker and glossy colours.

For residue on External grade Matt Anodised surfaces. A plastic scouring pad like 3M Scotch-Brite (Type A –Red) together with water and a suitable pH neutral detergent as mentioned above may be tried in a small inconspicuous area. Immediately after every cleaning process, thoroughly rinse with copious amounts of clean water. A high pressure water jet using only clean cool water may also be used for this process.

E) Don't Do's

Do not use;

- Abrasive materials, tools or anything that may scratch
- Strong acids or alkaline substances or other materials which can cause corrosion.
- Strong solvents including; thinners, petrol, diesel, turps or kerosene.
- Degreasers, pesticides, brand name lubricants or agents of unknown composition
- Laundry or dish detergents, oven cleaners or other harmful agents
- Agents on surfaces that are warmer than 25°C during cleaning
- On significant areas, agents/methods that have not been successfully used before
- Do not allow build up against the finish of; debris, agents or moisture, to reside for any extended period of time or allow immersion in soil, water or concrete.

Note

Details contained herewith do not constitute specific advice, merely they are provided as a matter of courtesy and as general information only. You should seek your specialist's advice, to ensure that any information or suggestion meet your specific requirements. Reference should be made to the respective standards for the finish concerned as well as Australian Aluminium Finishing Pty Ltd (AAF) Terms and Conditions of Sale. Latest releases of Australian Standards are available for purchase via the following website; www.standards.com.au

AAF makes no warranty as to the completeness, accuracy or reliability of any information expressed or contained in this document, and to the full extent permitted by law, AAF disclaims all liability and responsibility for any loss or damage, direct or indirect, which may be suffered by any persons acting in reliance on anything contained or omitted from this document.

Reference

Further instructions for maintenance and cleaning are available from, among others, the:

- Australian Standard (AS) Australia, (AS 1231-2000, App. C, Maintenance of Anodised Aluminium)
- Australian Standard (AS) Australia, (AS 3715-2002, App. C, Maintenance and repair of Powder-Coated Aluminium)
- American Architectural Manufacturer's Association (AAMA) U.S.A., (AAMA 610-1979 Cleaning Procedures)
- American Architectural Manufacturer's Association (AAMA) U.S.A., (AAMA 609- Cleaning Procedures)
- Aluminium-Zentrale Beratungs- und Informationsdienst in D-40003 Düsseldorf (Aluminium Center, Advisory and Information Service)
- Gütegemeinschaft für die Reinigung von Metallfassaden e.V. (GRM) in D-90402 Nürnberg (Registered Quality Association for the Cleaning of Metal Facade Elements)